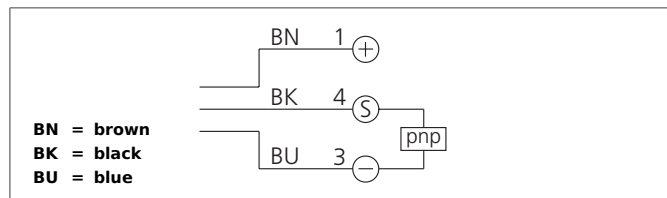


LGL 121 P3K-TSSL

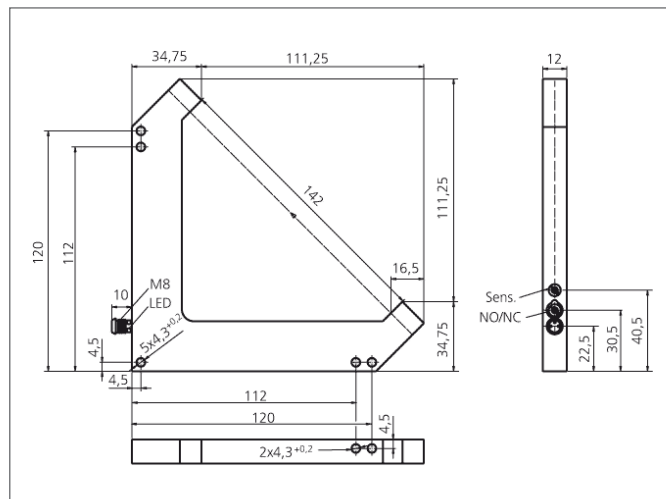
Laser Angled Light Barrier

- Very high resolution
- Mountable side by side
- Optical axis approachable in x-, y- and z-direction
- Visible laser spot
- High operating frequency
- Light/dark switching
- Laser class 1
- Bright ring LED



Safety instructions

Inproper use may result in hazardous radiation exposure. Pay attention to accident prevention rules and laser class. The instruments are not to be used for safety applications, in particular applications in which safety of persons depends on proper operation of the instruments. These instruments shall exclusively be used by qualified personnel. Repair only by di-soric.



TECHNICAL INFORMATION		+20°C, 24V DC
Design	Angle	
Branch length	120 mm	
Emitted light	Red light laser, 670 nm, clocked	
Service voltage	10 ... 35 V DC	
Transmitter / receiver	transmitter + receiver	
Laser class	1 (IEC 60825-1)	
Output	pnp, 200 mA, NO/NC, switchable	
Sensitivity adjustment	potentiometer	
Internal power consumption	< 30 mA	
Operating frequency	3.000 Hz	
Resolution	50 µm	
Switching hysteresis	< 20 µm	
Reproducibility	10 µm	
Laser power	< 100 µW	
Ambient temperature	+5 ... +45 °C	
Ambient light immunity	> 100 kLx	
Insulation voltage endurance	250 V	
Protection class	IP 67	
Casing material	Aluminium black anodized	
Connection	Connector, M8, 3-poled	
Signal input	< 2,8 V	