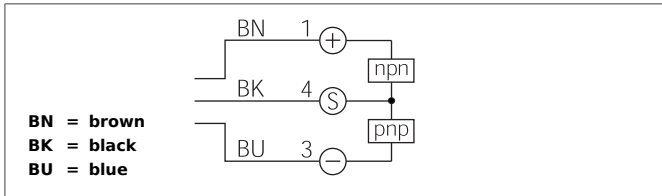


Fork Light Barrier

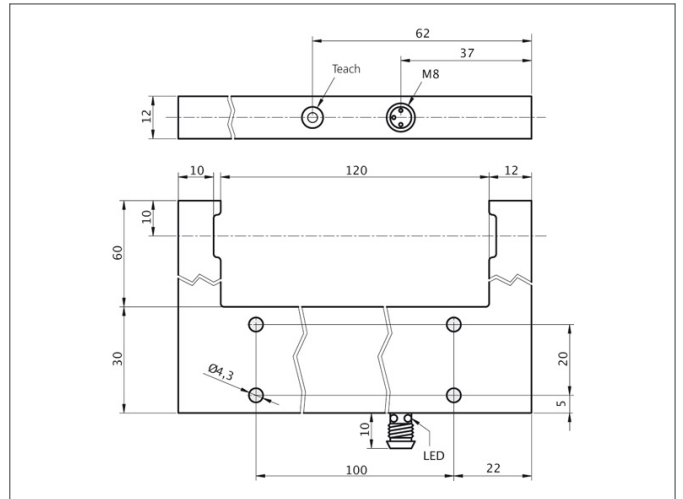
- Fast, simple, reliable: sensitivity adjustment via the teach key
- Auto-teach during a running process
- LED indicator for the teach procedure
- Detection of even the smallest objects
- Large functional reserve
- Light/dark switching



Safety instructions

The Instruments are not to be used for safety applications, in particular applications in which safety of persons depends on proper operation of the instruments.

These instruments shall exclusively be used by qualified personnel.
Repair only by di-soric.



TECHNICAL INFORMATION	+20°C, 24V DC
Evaluation	digital
Size	144 x 90 x 12 mm (Dimensions)
Design	fork
Fork opening	120 mm
Emitted light	Red, 660 nm, clocked
Service voltage	10 ... 35 V DC
Transmitter / receiver	transmitter + receiver
Output	pnp+npn, 200 mA, NO/NC, switchable
Sensitivity adjustment	teach button
Internal power consumption	< 35 mA
Voltage drop	2,0 V
Ambient temperature	-10 ... +60 °C
Protection class	IP 67
Connection	Connector, M8, 3-poled