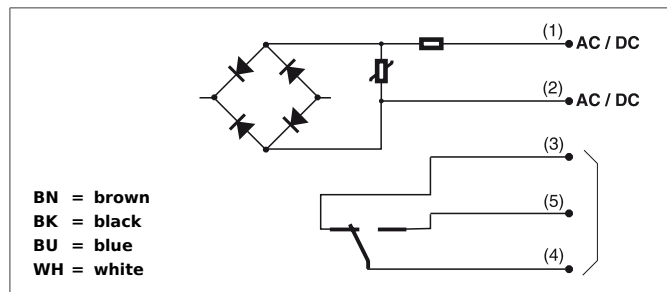


OTV 80 K 2000 R4-KL

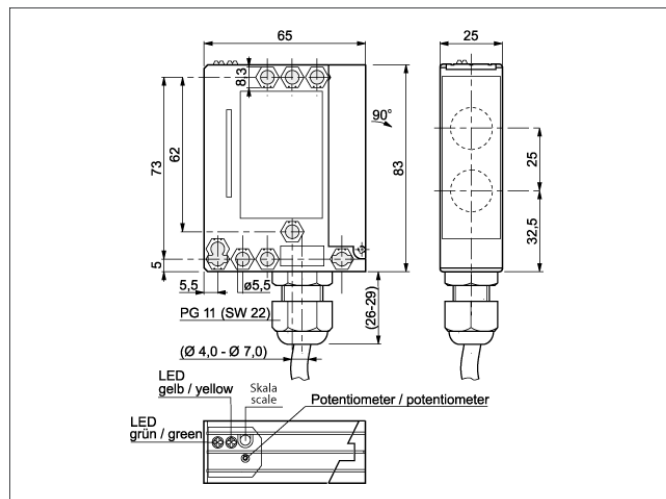
Diffuse Sensor

- Infrared light, clocked
- 4-turn potentiometer
- Robust casing with Connector M12
- Dark-/light switching, push-pull
- Functional reserve indicator/contamination indicator
- Robust metal casing



Safety instructions

The Instruments are not to be used for safety applications, in particular applications in which safety of persons depends on proper operation of the instruments.
These instruments shall exclusively be used by qualified personnel.
Repair only by di-soric.



TECHNICAL INFORMATION	
Evaluation	+20°C, 24V DC digital
Size	83 x 65 x 25 mm (Dimensions)
Design	cuboid design
Emitted light	Infrared, 880 nm, clocked
Standardized measuring plate	400 x 400 mm, white
Service voltage	20 ... 265 V AC / 20 ... 320 V DC
background suppression	no
Operating distance	50 ... 2.000 mm
Output	relais, 400 V AC / 300 V DC, 6 A / 1.500 VA
Sensitivity adjustment	potentiometer
Internal power consumption	< 2 VA
Operating frequency	20 Hz
Response-/release time	< 20 ms
Switching hysteresis	< 10 %
Ambient temperature	-25 ... +55 °C
Ambient light immunity	> 10 kLx
Protection class	IP 67
Casing material	PBTP
Material	glass (Window)
Connection	Connection compartment, PG 11