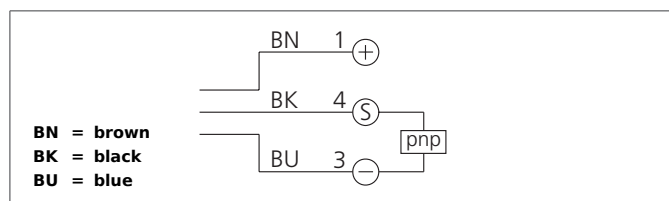
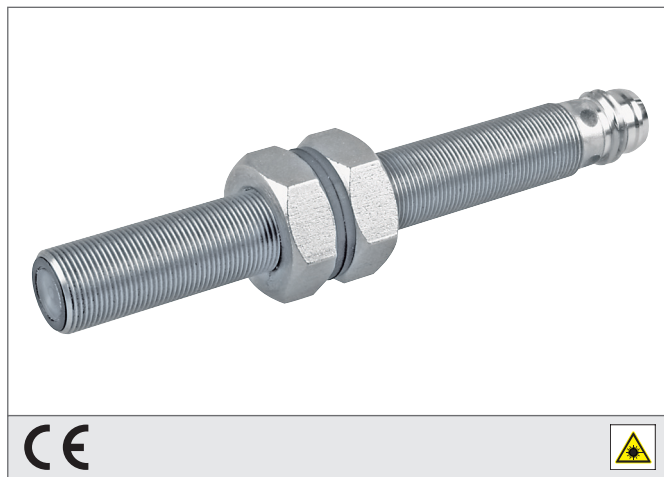


## OLE 08 V 2000 P2K-TSSL

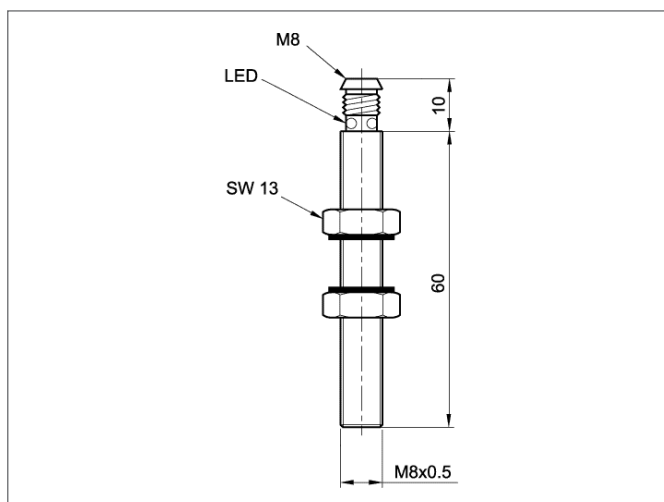
### Laser Through Beam Sensor, Receiver

- Small design
- High switching accuracy
- High operating frequency
- Robust metal casing
- High protection class



#### Safety instructions

Inproper use may result in hazardous radiation exposure. Pay attention to accident prevention rules and laser class. The instruments are not to be used for safety applications, in particular applications in which safety of persons depends on proper operation of the instruments. These instruments shall exclusively be used by qualified personnel. Repair only by di-soric.



TECHNICAL INFORMATION		+20°C, 24V DC
Size		M8 (Gewinde)
Design		screw
Emitted light		Red light laser, 670 nm, clocked
Operating distance		0 ... 2.000 mm
Service voltage		10 ... 35 V DC
Transmitter / receiver		receiver
Laser class		2 (EN 60825-1)
Output		pnp, 200 mA, NO
Internal power consumption		< 30 mA
Voltage drop		< 2,5 V
Operating frequency		2.000 Hz
Resolution		Ø 1,0 mm
Switching hysteresis		< 0,1 mm
Reproducibility		< 0,1 mm
Ambient temperature		0 ... +50 °C
Ambient light immunity		> 5 kLx
Insulation voltage endurance		500 V
Protection class		IP 67
Casing material		stainless steel
Connection		Connector, M8, 3-poled