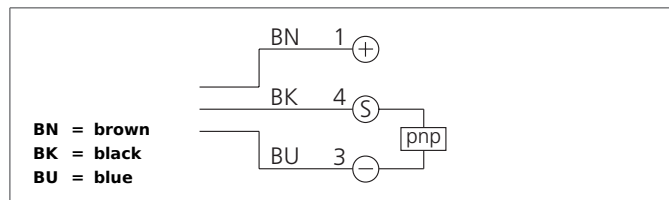


LLRVTI 51 M 500 P3K-IBS

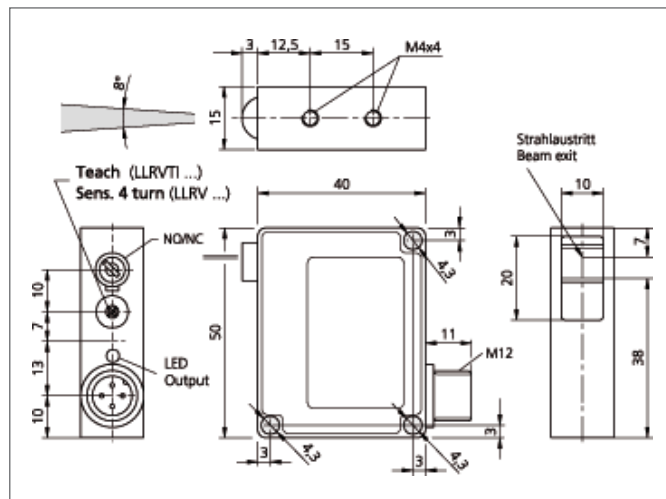
Laser Line Retroreflective Sensor

- Fan-shaped laser beam with auto-collimation principle
- Detection of smallest parts within the entire active zone
- Red light laser, clocked
- Teach function
- Robust metal casing



Safety instructions

Inproper use may result in hazardous radiation exposure. Pay attention to accident prevention rules and laser class. The instruments are not to be used for safety applications, in particular applications in which safety of persons depends on proper operation of the instruments. These instruments shall exclusively be used by qualified personnel. Repair only by di-soric.



TECHNICAL INFORMATION		+20°C, 24V DC
Evaluation		digital
Size		50 x 40 x 15 mm (Dimensions)
Design		cuboid design
Emitted light		Red light laser, 670 nm, clocked
Operating distance		50 ... 500 mm
Service voltage		10 ... 35 V DC
Laser class		2 (EN 60825-1)
Output		pnp, 200 mA, NO/NC, switchable
Sensitivity adjustment		teach button
Internal power consumption		< 30 mA
Operating frequency		750 Hz
Resolution		25 ... 100 % covering of laser line
Ambient temperature		+5 ... +50 °C
Ambient light immunity		> 15 kLx
Protection class		IP 67
Casing material		die-cast zinc lacquered finish
Material		polymethyl methacrylate (Window)
Connection		Connector, M12, 3-poled