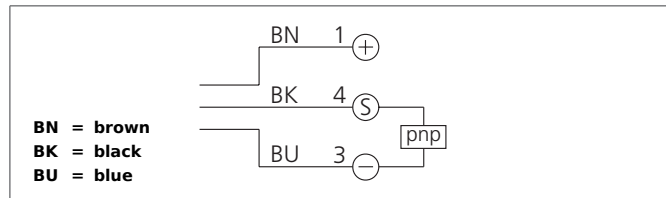


LLRVTI 51 M 500 P3K-TSSL

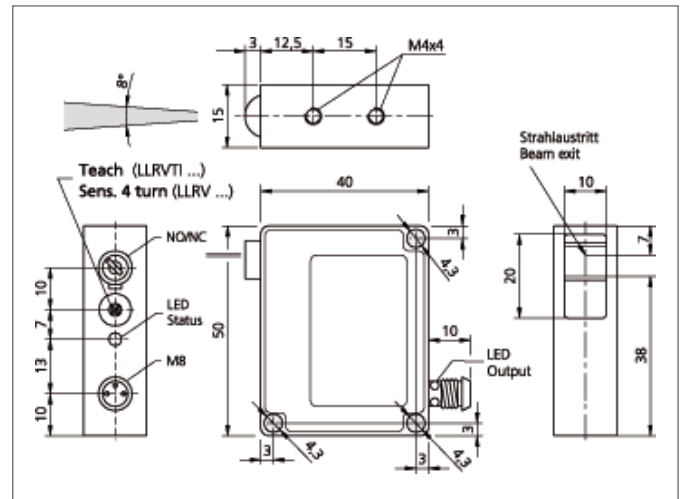
Laser Line Retroreflective Sensor

- Fan-shaped laser beam with auto-collimation principle
- Detection of smallest parts within the entire active zone
- Red light laser, clocked
- Teach function
- Robust metal casing



Safety instructions

Inproper use may result in hazardous radiation exposure. Pay attention to accident prevention rules and laser class. The instruments are not to be used for safety applications, in particular applications in which safety of persons depends on proper operation of the instruments. These instruments shall exclusively be used by qualified personnel. Repair only by di-soric.



TECHNICAL INFORMATION	
Evaluation	+20°C, 24V DC digital
Size	50 x 40 x 15 mm (Dimensions)
Design	cuboid design
Emitted light	Red light laser, 670 nm, clocked
Operating distance	50 ... 500 mm
Service voltage	10 ... 35 V DC
Laser class	2 (EN 60825-1)
Output	pnp, 200 mA, NO/NC, switchable
Sensitivity adjustment	teach button
Internal power consumption	< 30 mA
Operating frequency	750 Hz
Resolution	25 ... 100 % covering of laser line
Ambient temperature	+5 ... +50 °C
Ambient light immunity	> 15 kLx
Protection class	IP 67
Casing material	die-cast zinc lacquered finish
Material	polymethyl methacrylate (Window)
Connection	Connector, M8, 3-poled