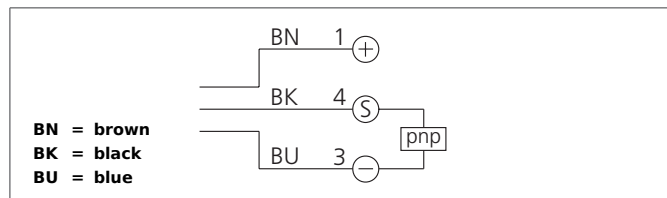


## OTV 50 M 1200 P3K-TSSL

### Diffuse Sensor

- Infrared light, clocked
- 4-turn potentiometer
- Bright LED, Connector M8 with ring LED
- Dark-/light switching, push-pull
- Functional reserve indicator/contamination indicator
- Robust metal casing

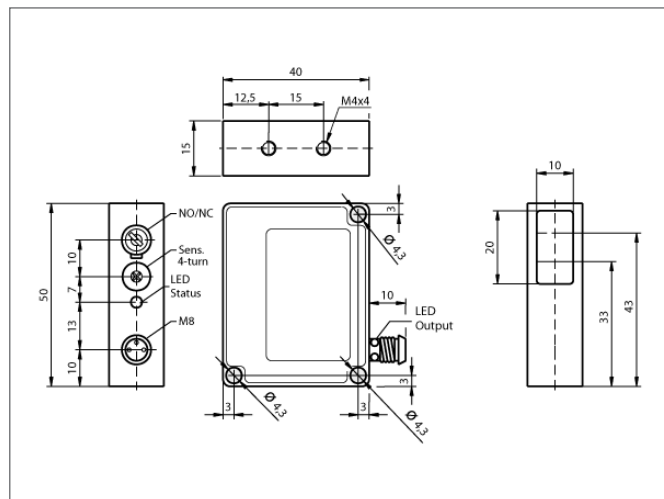


#### Safety instructions

The Instruments are not to be used for safety applications, in particular applications in which safety of persons depends on proper operation of the instruments.

These instruments shall exclusively be used by qualified personnel.

Repair only by di-soric.



TECHNICAL INFORMATION	
Evaluation	digital
Size	50 x 40 x 15 mm (Dimensions)
Design	cuboid design
Emitted light	Infrared, 880 nm, clocked
Service voltage	10 ... 35 V DC
background suppression	no
Operating distance	50 ... 1.200 mm
Output	pnp, 200 mA, NO/NC, switchable
Sensitivity adjustment	potentiometer
Internal power consumption	< 45 mA
Voltage drop	< 2,0 V
Operating frequency	1.000 Hz
Switching hysteresis	< 12 %
Reproducibility	< 1 %
Ambient temperature	-10 ... +60 °C
Ambient light immunity	> 10 kLx
Insulation voltage endurance	500 V
Protection class	IP 67
Casing material	die-cast zinc lacquered finish
Material	polymethyl methacrylate (Window)
Connection	Connector, M8, 3-poled