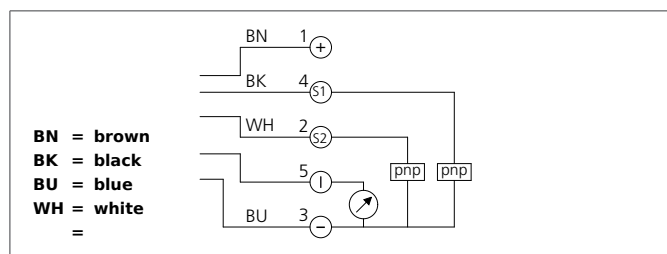


## OAA 1500 IPP3K-IBS

### Diffuse Sensor with Background Suppression

- Two independently adjustable thresholds
- Two switching outputs
- Analog output 4 ... 20 mA
- Suitable for uneven surfaces
- High operating distance
- Very good colour independence
- Robust metal casing
- High protection class

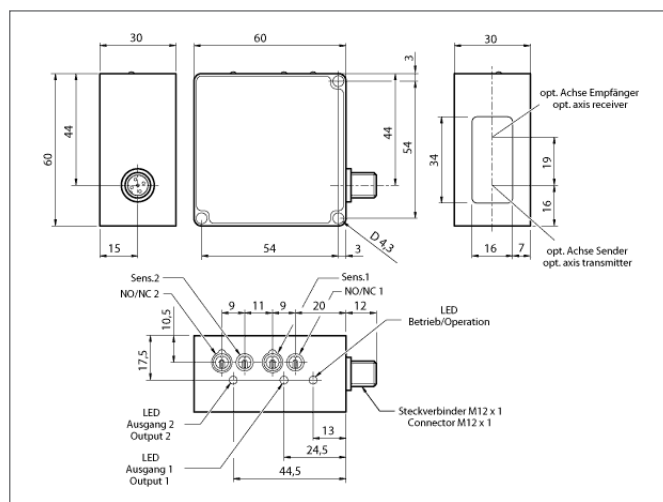


#### Safety instructions

The Instruments are not to be used for safety applications, in particular applications in which safety of persons depends on proper operation of the instruments.

These instruments shall exclusively be used by qualified personnel.

Repair only by di-soric.



TECHNICAL INFORMATION	
Size	60 x 60 x 30 mm (Dimensions)
Emitted light	Infrared, 880 nm, clocked
Service voltage	15 ... 35 V DC
Diameter of light spot	Ø 7 ... 26 mm
Operating distance	180 ... 1.500 mm
Output	pnp, 200 mA, NO/NC, switchable
analog output	4 ... 20 mA, unlinearized
Internal power consumption	< 60 mA
Voltage drop	< 2,0 V
Operating frequency	10 Hz
Accuracy	< 10 % Far range / 4 % Middle range / 1 % Close-up range
Output sequence frequency	analog output, 24 Hz
Switching hysteresis	< 15 %
Threshold	0 ... 100 % adjustable
Ambient temperature	-10 ... +60 °C
Ambient light immunity	> 2 kLx, at 30° angle of incidence
Insulation voltage endurance	500 V
Protection class	IP 67
Casing material	Aluminium black anodized
Connection	Connector, M12, 3-poled, 5-poled