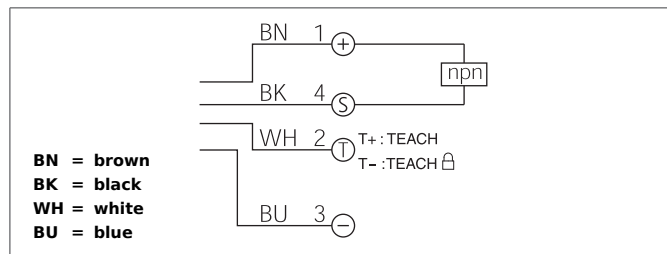


LHTTI 51 M 200 FN3K-IBS

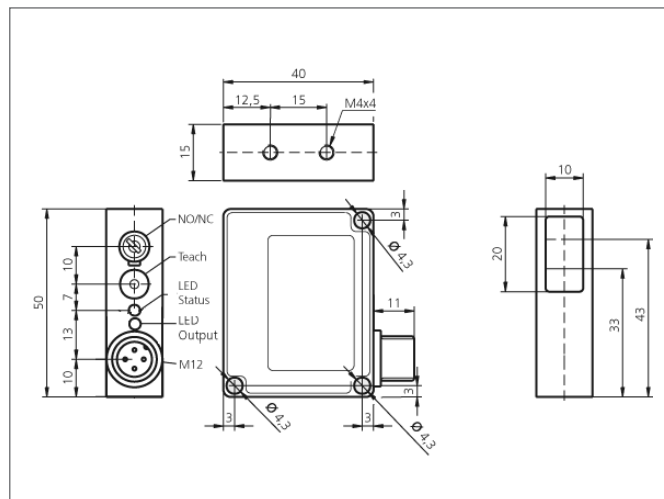
Laser Diffuse Sensor with Background Suppression

- Automatic adjustment of transmit power
- red light laser, clocked with small laser spot
- Teach function
- Remote teach option with key-lock function
- Electronical background suppression
- Functional reserve indicator/contamination indicator
- Bright LED
- Light/dark switching



Safety instructions

Inproper use may result in hazardous radiation exposure. Pay attention to accident prevention rules and laser class. The instruments are not to be used for safety applications, in particular applications in which safety of persons depends on proper operation of the instruments. These instruments shall exclusively be used by qualified personnel. Repair only by di-soric.



| TECHNICAL INFORMATION | |
|------------------------------|--|
| Evaluation | digital |
| Size | 50 x 40 x 15 mm (Dimensions) |
| Design | cuboid design |
| Emitted light | Red light laser, 650 nm, clocked |
| Service voltage | 10 ... 35 V DC |
| background suppression | yes |
| Diameter of light spot | Ø 1,5 mm |
| Operating distance | 50 ... 200 mm |
| Laser class | 2 (EN 60825-1) |
| Output | nnp, 200 mA, NO/NC, switchable |
| Sensitivity adjustment | teach key + remote teach |
| Internal power consumption | < 45 mA |
| Voltage drop | < 2,0 V |
| Operating frequency | 500 Hz |
| Switching hysteresis | 6 % |
| Ambient temperature | -10 ... +50 °C |
| Ambient light immunity | 5 kLx |
| Insulation voltage endurance | 500 V |
| Protection class | IP 67 |
| Protection degree | III, operation on protective low voltage |
| Casing material | die-cast zinc lacquered finish |
| Material | polycarbonate (Window) |
| Connection | Connector, M12, 4-poled |