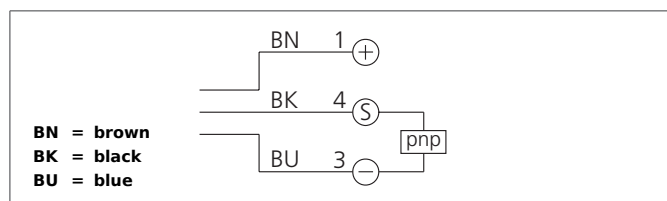


LTV 51 M 600 P3K-TSSL

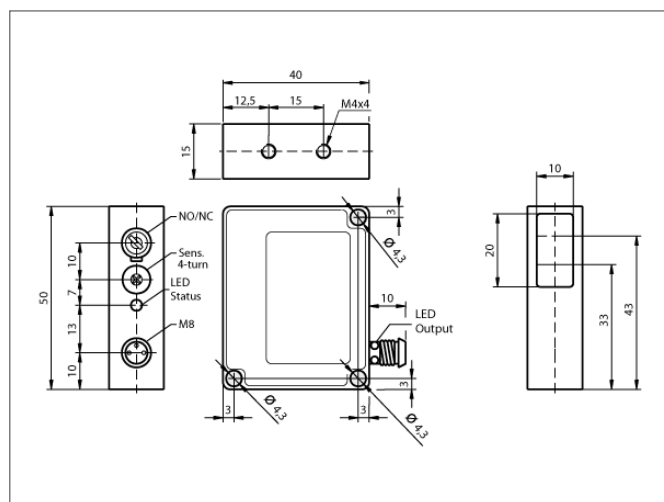
Laser Diffuse Sensor

- red light laser, clocked with small laser spot
- 4-turn potentiometer
- Functional reserve indicator/contamination indicator
- Bright LED, Connector M8 with ring LED
- Light/dark switching



Safety instructions

Inproper use may result in hazardous radiation exposure. Pay attention to accident prevention rules and laser class. The instruments are not to be used for safety applications, in particular applications in which safety of persons depends on proper operation of the instruments. These instruments shall exclusively be used by qualified personnel. Repair only by di-soric.



TECHNICAL INFORMATION	
Evaluation	+20 °C, 24V DC digital
Size	50 x 40 x 15 mm (Dimensions)
Design	cuboid design
Emitted light	Red light laser, 650 nm, clocked
Service voltage	10 ... 35 V DC
background suppression	no
Operating distance	100 ... 600 mm
Laser class	2 (EN 60825-1)
Output	pnp, 200 mA, NO/NC, switchable
Sensitivity adjustment	potentiometer
Internal power consumption	< 30 mA
Voltage drop	< 2,0 V
Operating frequency	500 Hz
Switching hysteresis	< 10 %
Reproducibility	< 2 %
Ambient temperature	-10 ... +50 °C
Ambient light immunity	> 5 kLx
Protection class	IP 67
Casing material	die-cast zinc lacquered finish
Connection	Connector, M8, 3-poled