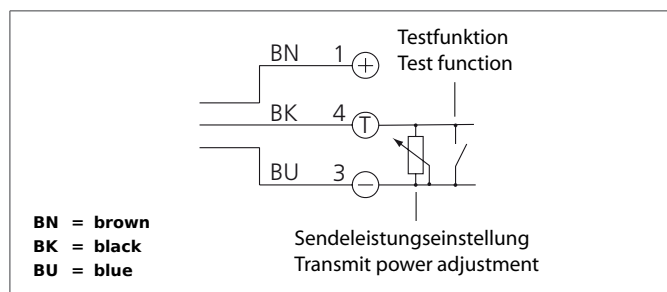


## High Performance Photoelectric Sensor, Transmitter

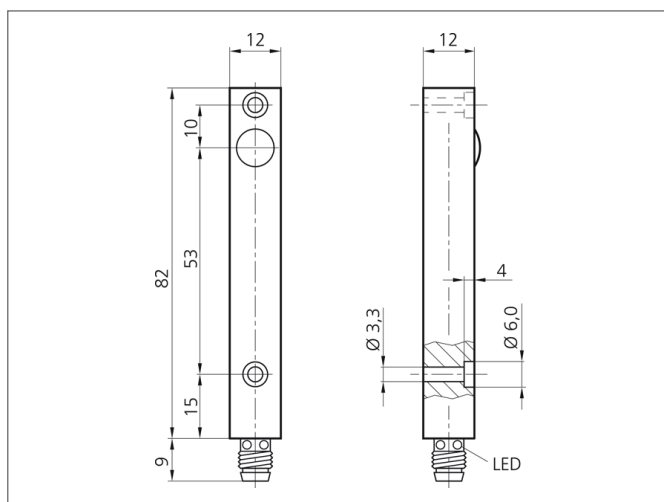
- 
- A vertical black metal bracket with three circular holes and a threaded base. The bracket is shown against a white background. The top hole is the largest, the middle hole is the smallest, and the bottom hole is medium-sized. The base is a threaded metal rod.



The Instruments are not to be used for safety applications, in particular applications in which safety of persons depends on proper operation of the instruments.

These instruments shall exclusively be used by qualified personnel.

Repair only by di-soric.



TECHNICAL INFORMATION		+20°C, 24V DC
Size		82 x 12 x 12 mm (Dimensions)
Design		cuboid design
Emitted light		Infrared, 870 nm, clocked
Operating distance		dependent on the receiver
Service voltage		10 ... 35 V DC
Transmitter / receiver		transmitter
Opening angle		15°
Internal power consumption		< 55 mA
Shock-/vibration load		10 ... 55 Hz / 2,0 mm / 30 g
Ambient temperature		-20 ... +60 °C
Protection class		IP 67
Casing material		Aluminium anodized
Connection		Connector, M8, 3-poled