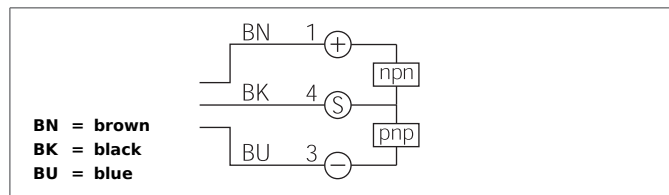
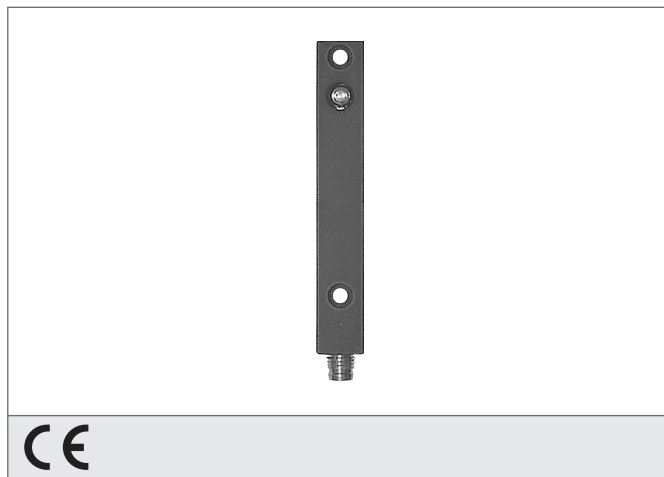


OEPQ 12 M 5000 G1-TSSL

High Performance Photoelectric Sensor, Receiver

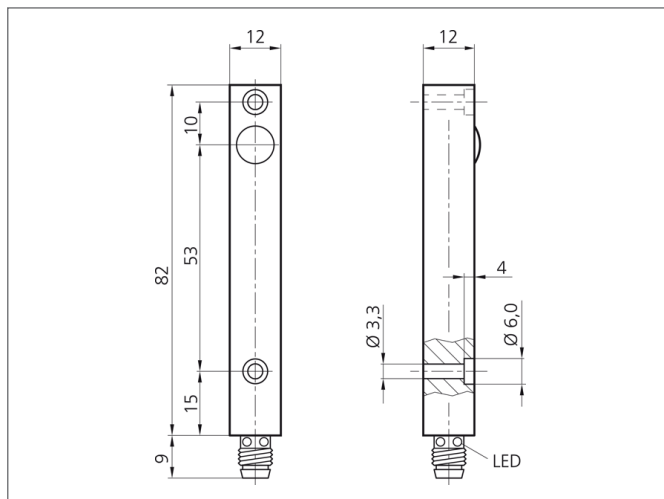
- Operating distances up to 5 m
- Integrated amplifier electronics
- Transistor output with push-pull
- Extremely dirt-resistant
- Easy adjustment
- Different designs to be combined
- High protection class
- Compact design



Safety instructions

The Instruments are not to be used for safety applications, in particular applications in which safety of persons depends on proper operation of the instruments.

These instruments shall exclusively be used by qualified personnel.
Repair only by di-soric.



TECHNICAL INFORMATION		+20°C, 24V DC
Size	82 x 12 x 12 mm (Dimensions)	
Design	cuboid design	
Operating distance	0 ... 5.000 mm	
Service voltage	10 ... 35 V DC	
Transmitter / receiver	receiver	
Output	Push pull, 200 mA, NC	
Internal power consumption	< 55 mA	
Shock-/vibration load	10 ... 55 Hz / 2,0 mm / 30 g	
Operating frequency	500 Hz	
Ambient temperature	-20 ... +60 °C	
Ambient light immunity	> 15 kLx, Sunlight, > 2 kLx, g	
Protection class	IP 67	
Casing material	Aluminium anodized	
Connection	Connector, M8, 3-poled	