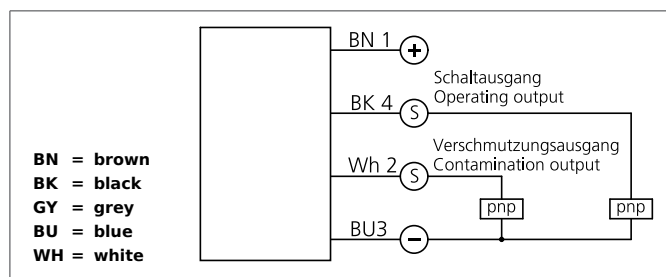


High Performance Angled Light Barrier

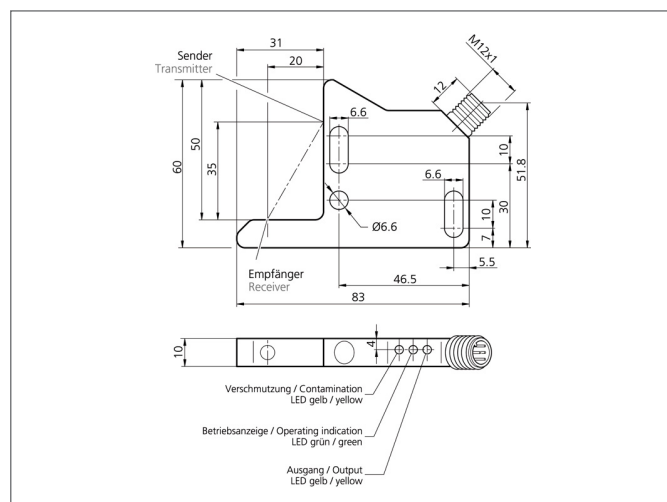
-



The Instruments are not to be used for safety applications, in particular applications in which safety of persons depends on proper operation of the instruments.

These instruments shall exclusively be used by qualified personnel.

Repair only by di-soric.



TECHNICAL INFORMATION	+20°C, 24V DC
Design	Angle
Branch length	50/31 mm
Emitted light	Red, 660 nm, clocked
Service voltage	10 ... 35 V DC
Transmitter / receiver	transmitter + receiver
Output	pnp, 200 mA, NO
Contamination output	pnp, 200 mA
Sensitivity adjustment	no setting elements
Internal power consumption	< 45 mA
Operating frequency	200 Hz
Ambient temperature	-10 ... +60 °C
Ambient light immunity	5 kLx
Protection class	IP 67
Casing material	die-cast zinc
Connection	Connector, M12, 4-poled