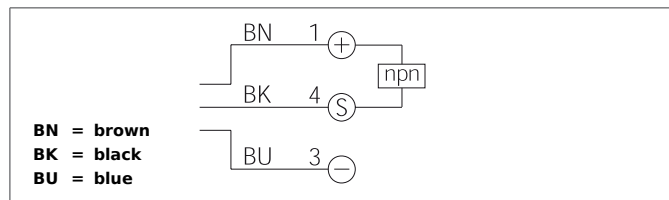


OTV Q5 M 20 N1LK

Diffuse Sensor

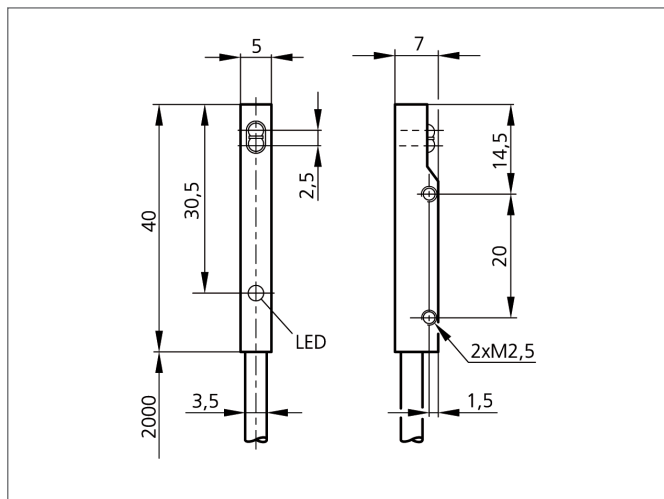
- Extremely small design
- Infrared light, clocked
- High resolution
- Functional reserve
- Insensitive to dirt
- High protection class



Safety instructions

The Instruments are not to be used for safety applications, in particular applications in which safety of persons depends on proper operation of the instruments.

These instruments shall exclusively be used by qualified personnel.
Repair only by di-soric.



| TECHNICAL INFORMATION | | +20°C, 24V DC |
|------------------------------|--|----------------------------|
| Evaluation | | digital |
| Size | | 5 x 7 x 40 mm (Dimensions) |
| Design | | cuboid design |
| Emitted light | | Infrared, 880 nm, clocked |
| Standardized measuring plate | | 100 x 100 mm, white |
| Service voltage | | 10 ... 30 V DC |
| background suppression | | no |
| Operating distance | | 20 mm |
| Output | | npn, 100 mA, NO |
| Sensitivity adjustment | | no setting elements |
| Internal power consumption | | < 15 mA |
| Voltage drop | | < 2,0 V |
| Operating frequency | | 250 Hz |
| Response-/release time | | < 2,5 ms / < 2,5 ms |
| Switching hysteresis | | < 10 % |
| Ambient temperature | | -25 ... +55 °C |
| Ambient light immunity | | > 10 kLx |
| Insulation voltage endurance | | 500 V |
| Protection class | | IP 67 |
| Casing material | | stainless steel |
| Connection | | cable PVC, 2.000 mm |