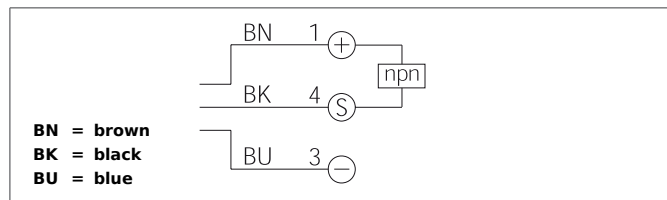


# OTVTI 50 M 600 N3K-TSSL

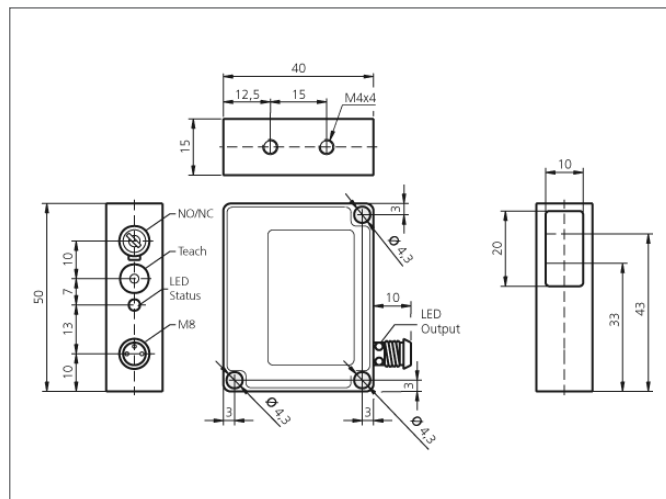
## Diffuse Sensor

- Infrared light, clocked
- Teach function
- Bright LED, Connector M8 with ring LED
- Dark-/light switching, push-pull
- Functional reserve indicator/contamination indicator
- Robust metal casing



### Safety instructions

The Instruments are not to be used for safety applications, in particular applications in which safety of persons depends on proper operation of the instruments.  
These instruments shall exclusively be used by qualified personnel.  
Repair only by di-soric.



TECHNICAL INFORMATION	
Operating principle	<b>+20°C, 24V DC</b> Diffuse reflective sensor
Evaluation	digital
Size	50 x 40 x 15 mm (Dimensions)
Design	cuboid design
Emitted light	Infrared, 880 nm, clocked
Service voltage	10 ... 35 V DC
Operating distance	100 ... 600 mm
Output	npn, 200 mA, NO/NC, switchable
Sensitivity adjustment	teach button
Internal power consumption	< 45 mA
Operating frequency	1.000 Hz
Switching hysteresis	12 %
Reproducibility	< 1 %
Ambient temperature	-10 ... +60 °C
Ambient light immunity	> 10.000 Lux
Protection class	IP 67
Protection degree	III, operation on protective low voltage
Casing material	die-cast zinc lacquered finish
Material	polycarbonate (Window)
Connection	Connector, M8, 3-poled