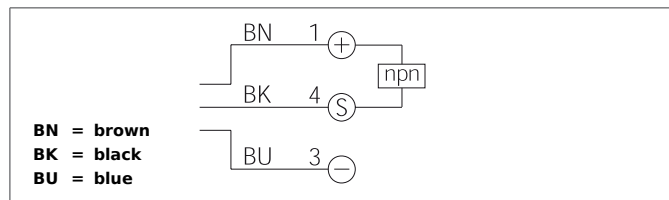


LTV 51 M 200 N3K-TSSL

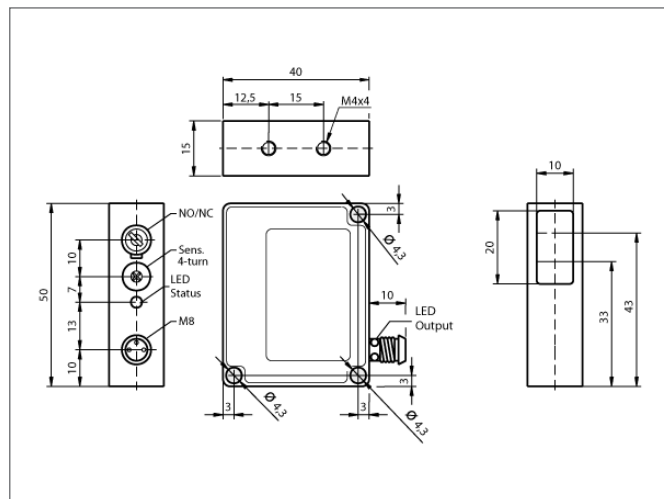
Laser Diffuse Sensor

- red light laser, clocked with small laser spot
- 4-turn potentiometer
- Functional reserve indicator/contamination indicator
- Bright LED, Connector M8 with ring LED
- Light/dark switching



Safety instructions

Inproper use may result in hazardous radiation exposure. Pay attention to accident prevention rules and laser class. The instruments are not to be used for safety applications, in particular applications in which safety of persons depends on proper operation of the instruments. These instruments shall exclusively be used by qualified personnel. Repair only by di-soric.



TECHNICAL INFORMATION		+20°C, 24V DC
Evaluation		digital
Size		50 x 40 x 15 mm (Dimensions)
Emitted light		Red light laser, 670 nm, clocked
Service voltage		10 ... 35 V DC
Diameter of light spot		Ø 2 mm
Operating distance		75 ... 200 mm
Laser class		2 (EN 60825-1)
Output		npn, 200 mA, NO/NC, switchable
Sensitivity adjustment		potentiometer
Internal power consumption		30 mA
Operating frequency		2.000 Hz
Ambient temperature		0 ... +45 °C
Ambient light immunity		> 8 kLx
Protection class		IP 67
Protection degree		III, operation on protective low voltage
Casing material		die-cast zinc lacquered finish
Material		polycarbonate (Window)
Connection		Connector, M8, 3-poled