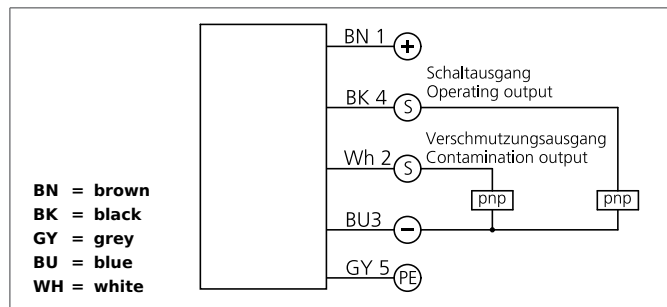


OGL 50/31-0 P6L-IBS/PE

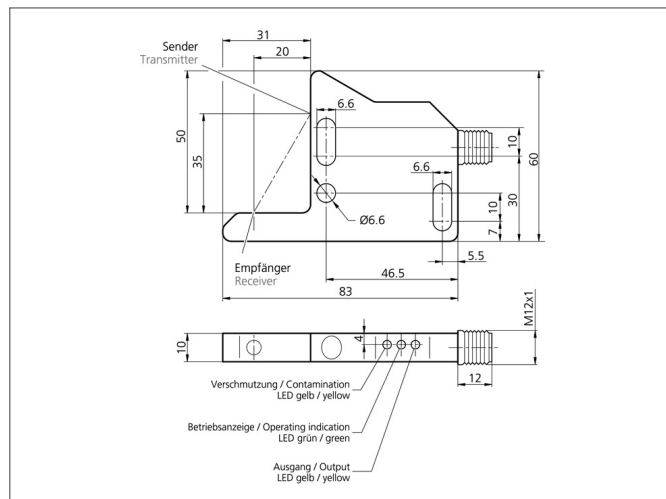
High Performance Angled Light Barrier

- Intelligent contamination output with LED
- High functional reserve
- Advanced PE-contact
- Optical axis approachable in x-, y- and z-direction
- All-purpose mounting
- Robust metal casing



Safety instructions

The Instruments are not to be used for safety applications, in particular applications in which safety of persons depends on proper operation of the instruments.
 These instruments shall exclusively be used by qualified personnel.
 Repair only by di-soric.



TECHNICAL INFORMATION		+20°C, 24V DC
Design	Angle	
Branch length	50/31 mm	
Emitted light	Infrared, 870 nm, clocked	
Service voltage	10 ... 35 V DC	
Transmitter / receiver	transmitter + receiver	
Output	pnp, 200 mA, NO	
Contamination output	pnp, 200 mA	
Sensitivity adjustment	no setting elements	
Internal power consumption	< 45 mA	
Operating frequency	100 Hz	
Ambient temperature	-10 ... +60 °C	
Ambient light immunity	> 5 kLx	
Protection class	IP 67	
Casing material	die-cast zinc	
Connection	Connector, M12, 5-poled	