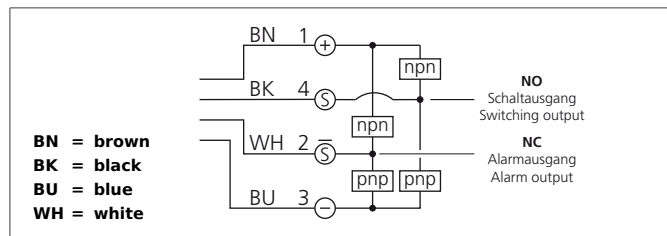


LHT 81 M 300 G6L-IBS

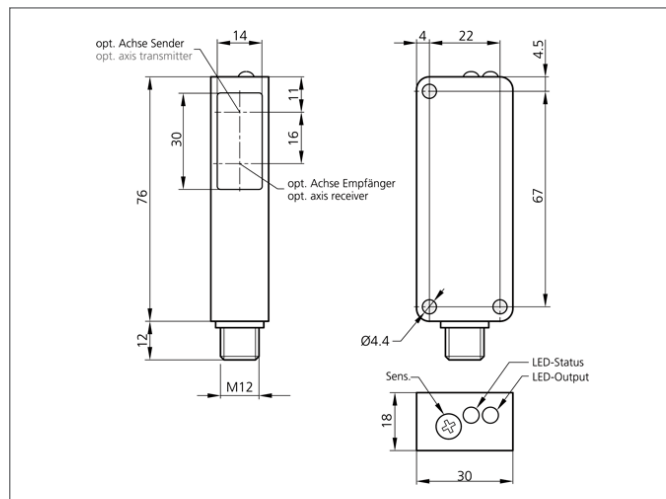
Laser Diffuse Sensor with Background Suppression

- Vibration-save 6-turn adjustment for finest adjustment
- red light laser, clocked with small laser spot
- Optical background suppression
- Push-pull pnp + npn
- High resolution, switching accuracy, switching frequency
- Functional reserve indicator and contamination indicator
- Robust metal casing



Safety instructions

Inproper use may result in hazardous radiation exposure. Pay attention to accident prevention rules and laser class. The instruments are not to be used for safety applications, in particular applications in which safety of persons depends on proper operation of the instruments. These instruments shall exclusively be used by qualified personnel. Repair only by di-soric.



TECHNICAL INFORMATION		+20°C, 24V DC
Evaluation		digital
Size		76 x 30 x 18 mm (Dimensions)
Design		cuboid design
Emitted light		Red light laser, 650 nm, clocked
Service voltage		10 ... 35 V DC
background suppression		yes
Operating distance		40 ... 300 mm 3
Laser class		1 (DIN EN 60825-1)
Output		Push pull, 200 mA
Sensitivity adjustment		6-turn adjustment
Internal power consumption		< 35 mA
Operating frequency		1.000 Hz
Switching hysteresis		< 1 %
Ambient temperature		-20 ... +60 °C
Ambient light immunity		> 5 kLx
Protection class		IP 67
Casing material		die-cast zinc black lacquered finish
Material		polycarbonate (Window)
Connection		Connector, M12, 4-poled