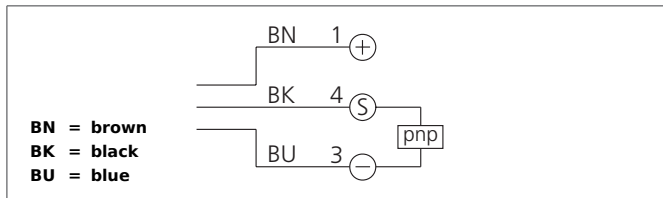


OR 6-41 K 4 P2-T3

Retroreflective Sensor

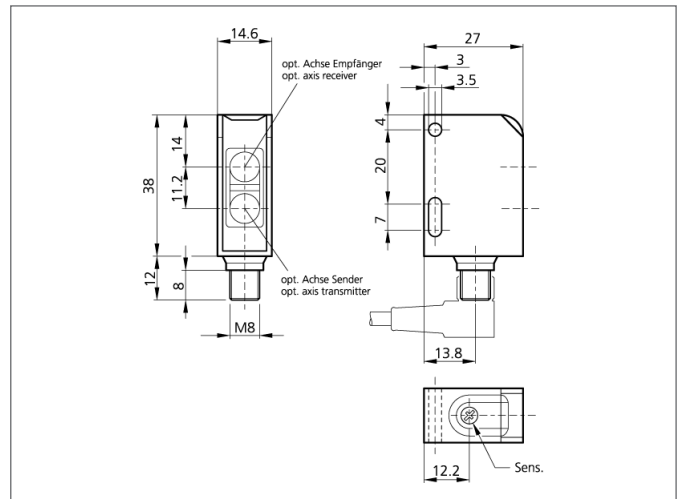
- High operating distance with a small design
- Visible red light with small light spot
- Sensitivity adjustable
- Small design
- LED indicator for output state



Safety instructions

The Instruments are not to be used for safety applications, in particular applications in which safety of persons depends on proper operation of the instruments.

These instruments shall exclusively be used by qualified personnel.
Repair only by di-soric.



| TECHNICAL INFORMATION | | +20°C, 24V DC |
|----------------------------|--|-------------------------------------|
| Size | | 38 x 27 x 15 mm (Dimensions) |
| Design | | cuboid design |
| Emitted light | | Red, 630 ... 670 nm, clocked |
| Operating distance | | 0 ... 4.000 mm, 9.000 mm, 10.000 mm |
| Service voltage | | 10 ... 30 V DC |
| Referring reflector | | 100 x 100 mm |
| Output | | pnp, 100 mA, NO |
| Sensitivity adjustment | | potentiometer |
| Internal power consumption | | < 25 mA |
| Operating frequency | | 500 Hz |
| Ambient temperature | | -25 ... +60 °C |
| Ambient light immunity | | > 5 kLx |
| Protection class | | IP 67 |
| Casing material | | plastics |
| Material | | plastic (Window) |
| Connection | | Connector, 3-poled |