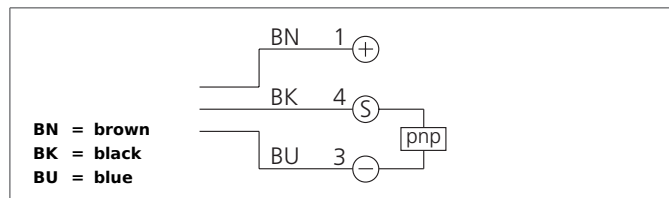


OR 6-41 K 4 P1-T3

Retroreflective Sensor

- High operating distance with a small design
- Visible red light with small light spot
- Sensitivity adjustable
- Small design
- LED indicator for output state

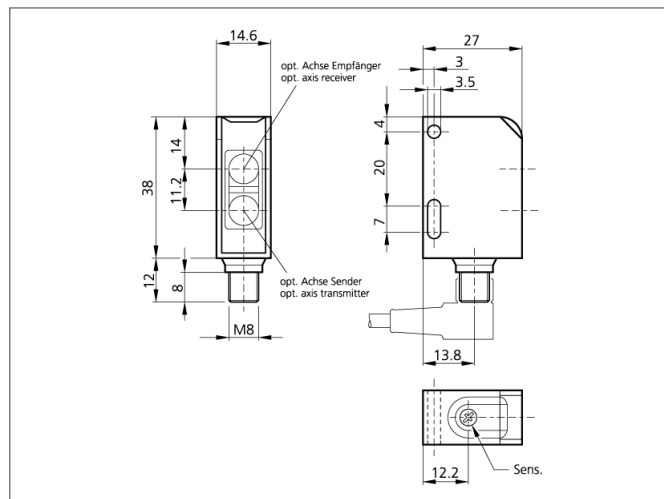


Safety instructions

The Instruments are not to be used for safety applications, in particular applications in which safety of persons depends on proper operation of the instruments.

These instruments shall exclusively be used by qualified personnel.

Repair only by di-soric.



TECHNICAL INFORMATION		+20°C, 24V DC
Size		38 x 27 x 15 mm (Dimensions)
Design		cuboid design
Emitted light		Red, 630 ... 670 nm, clocked
Operating distance		0 ... 4.000 mm, 9.000 mm, 10.000 mm
Service voltage		10 ... 30 V DC
Referring reflector		100 x 100 mm
Output		pnp, 100 mA, NC
Sensitivity adjustment		potentiometer
Internal power consumption		< 25 mA
Operating frequency		500 Hz
Ambient temperature		-25 ... +60 °C
Ambient light immunity		> 5 kLx
Protection class		IP 67
Casing material		plastics
Material		plastic (Window)
Connection		Connector, 3-poled