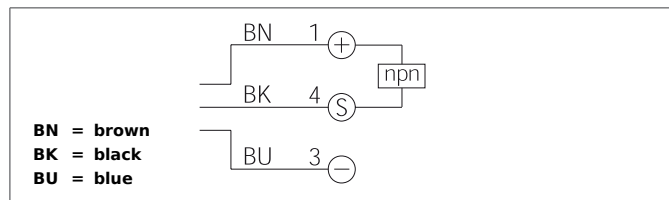


OT 6-41 K 0.6 N1-T3

Diffuse Sensor

- High ranges with a small design
- Visible red light with small light spot
- Sensitivity adjustable
- Small design
- LED indicator for output state

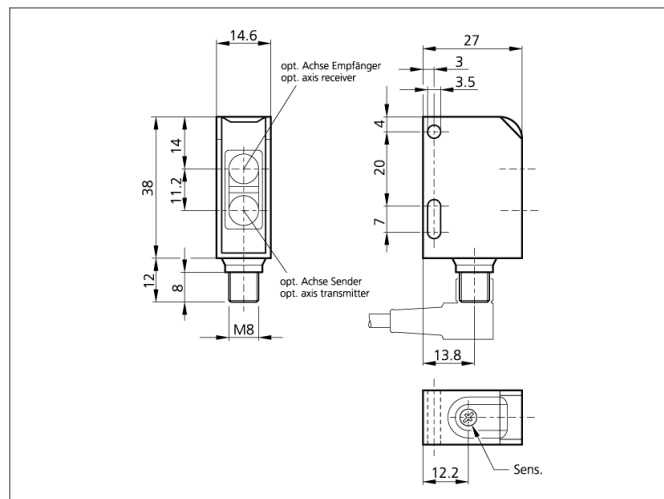


Safety instructions

The Instruments are not to be used for safety applications, in particular applications in which safety of persons depends on proper operation of the instruments.

These instruments shall exclusively be used by qualified personnel.

Repair only by di-soric.



TECHNICAL INFORMATION		+20°C, 24V DC
Evaluation		digital
Design		cuboid design
Emitted light		Red, 630 ... 670 nm, clocked
Standardized measuring plate		200 x 200 mm, white 90 % reflexion
Service voltage		10 ... 30 V DC
background suppression		no
Operating distance		0 ... 600 mm
Output		npn, 100 mA, 200 mA, NO
Sensitivity adjustment		potentiometer
Internal power consumption		< 25 mA
Operating frequency		500 Hz
Switching hysteresis		< 10 %
Reproducibility		0,1 mm
Ambient temperature		-25 ... +60 °C
Ambient light immunity		> 5 kLx
Protection class		IP 67
Casing material		plastics