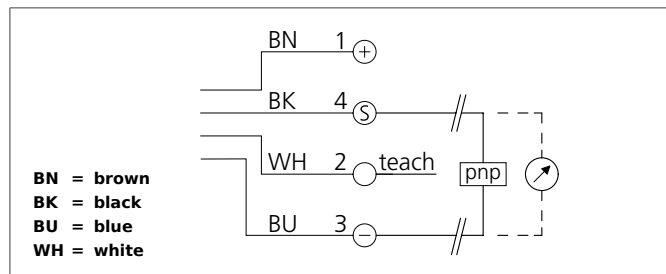


USTI 12 M 200-A-IBSL

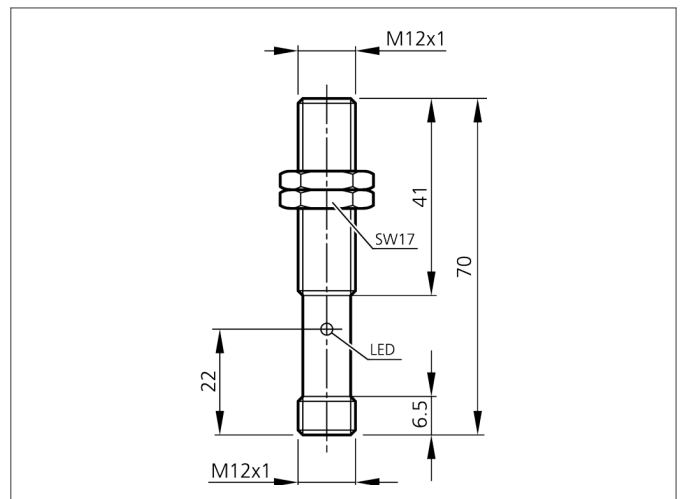
Ultrasonic Sensor

- Analog output: increasing/decreasing, teachable
- Small design
- Scanning does not depend on surface
- Narrow detection beam / small blind zone



Safety instructions

The Instruments are not to be used for safety applications, in particular applications in which safety of persons depends on proper operation of the instruments.
These instruments shall exclusively be used by qualified personnel.
Repair only by di-soric.



TECHNICAL INFORMATION		+20°C, 24V DC
Operating principle		Ultrasonic sensor
Size		M12 x 1 (Gewinde)
Design		screw
Service voltage		15 ... 30 V DC
Operating distance		20 ... 200 mm
Analog output		0 ... 10 V
Operating frequency		400.000 Hz
Ripple		10 %
Linearity analog output		< 1 % / Sn max.
Sensitivity adjustment		Teach key
Internal power consumption		< 30 mA
Operating frequency		13 Hz
Reproducibility		0,5%
Ambient temperature		-25 ... +70 °C
Load resistance		< 1.000 Ω
Insulation voltage endurance		500 V
Protection class		IP 65
Casing material		brass nickel plated
Connection		Connector, M12, 4-poled