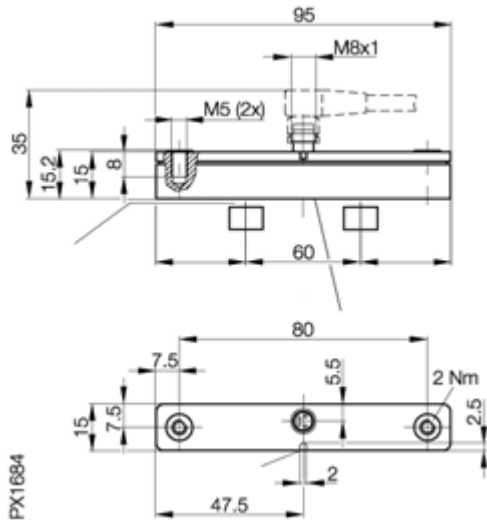
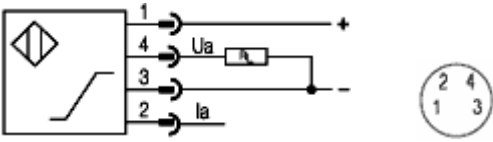


# Analog sensor

**BIL AD0-P060A-01-S75**



PX1684



## Type

Usable with  
 Working range  $s_a$   
 Ambient temperature range  $T_a$   
 Rated operating voltage  $U_e$   
 Supply voltage  $U_B$   
 Rated insulation voltage  $U_i$   
 Output voltage  
 No-load supply current  $I_0$  at  $U_e$   
 Temperature drift over  $+10...+75$  °C  
 non-linearity at  $s_l$   
 Repeat accuracy  
 Limit frequency ( $-3dB$ )  
 Protected against polarity reversal  
 Short circuit protected  
 Housing material  
 Connection  
 Recommended connector  
 Voltage output  
 Load resistance  $R_L$   
 Linear range  $s_l$

Inductive Analog Position Sensor  
 0...60mm  
 with voltage output signal  
 0...60mm  
 $-10...+75$  °C  
 24 V DC  
 15...30 V DC  
 75 V DC  
 Spannung 0...10 V  
 $\leq 30mA$   
 $\leq \pm 2\%$   
 $\leq \pm 1mm$   
 $\leq \pm 0,1\%$   
 1500Hz  
 yes  
 yes  
 PA 6.6  
 Connector  
 BKS-S 74 / BKS-S 75  
 $U_a$  by SI min 0V  $U_a$  by SI max.10V  
 $U_a$  by Se 5V  
 2kOhm  
 5...55 mm

Balluff GmbH  
 Postfach 1160  
 73761 Neuhausen  
 Telefon (07158) 173-0  
 Telefax (07158) 5010  
 11.01.2005 / Online-Productinformation

**BALLUFF**